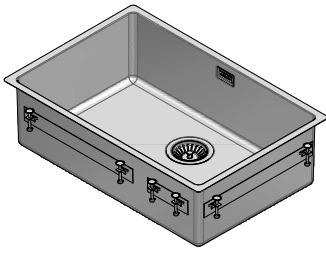


1X6240I

DESCRIZIONE Vasca Quadra Raggio "15" incasso e filo da 62x40 cm
DESCRIPTION 62x40 cm built-in and flush square bowl with radius "15"

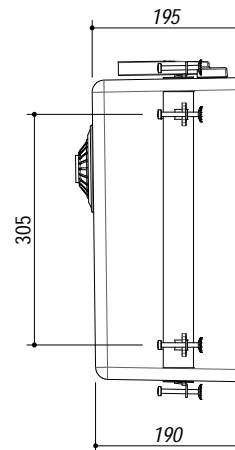
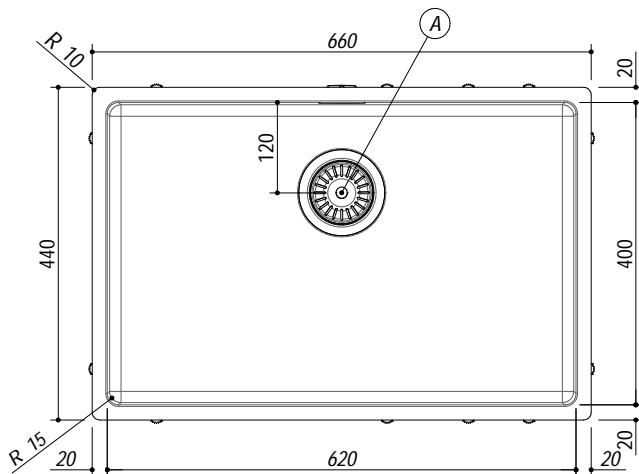
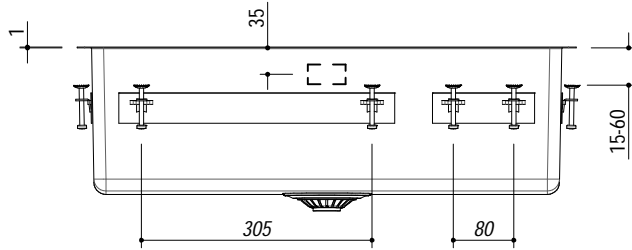
PESO LORDO 8 Kg
GROSS WEIGHT

DIMENSIONI IMBALLO 795x495x270 mm
PACKAGING DIMENSIONS



! E' NECESSARIO FARE UNO SCANSO NEL TOP IN CORRISPONDENZA DEL TROPPOPIENO
YOU SHOULD MAKE A SLOT IN THE TOP WHERE THE OVERFLOW IS INSTALLED

- **Acciaio inox AISI 304 di spessore elevato (AISI 304 extra thick stainless steel)**
- **Dimensione vasca: 62x40x19,5 h (Bowl dimensions: 62x40x19,5 h cm bowl)**
- **Dotazioni: pilettona 3"1/2, troppo-pieno con scarico perimetrale (Equipment: 3.5" basket strainer waste, (A) perimeter overflow)**
- **Base inserimento vasca: 75 (Base unit for bowl: 75)**
- **Incasso: 64x42 cm + intaglio per troppo-pieno (Built-in: 64x42 cm cut out + notch for overflow)**
- **Filotop: 66,3x44,3 cm (Flush: 66,3x44,3 cm)**



SCALA DISEGNO 1:10
DRAWING SCALE

TUTTE LE MISURE IN mm
ALL MEASURES IN mm

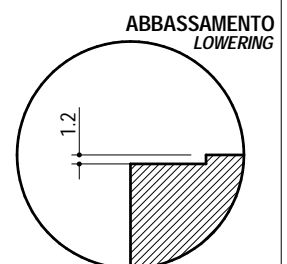
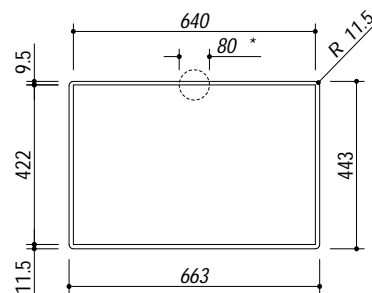
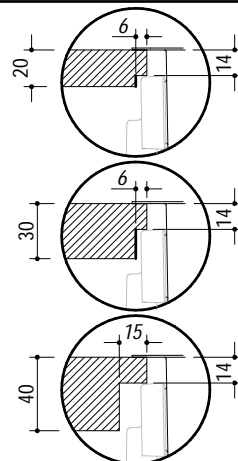
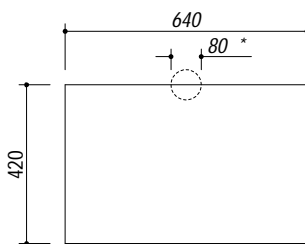
TOLLERANZA LINEARE: ± 0.5 mm
LINEAR TOLERANCE

TOLLERANZA ANGOLARE: ± 0.2 °
ANGULAR TOLERANCE

FORATURA PER INSTALLAZIONE AD INCASSO
BUILT-IN CUTOUT FOR TOP

*** SCANSO NEL TOP PER IL TROPPOPIENO**
*** SLOT IN THE TOP FOR THE OVERFLOW**

FORATURA PER INSTALLAZIONE A FILO
FLUSH CUTOUT FOR TOP



1:20

1:20