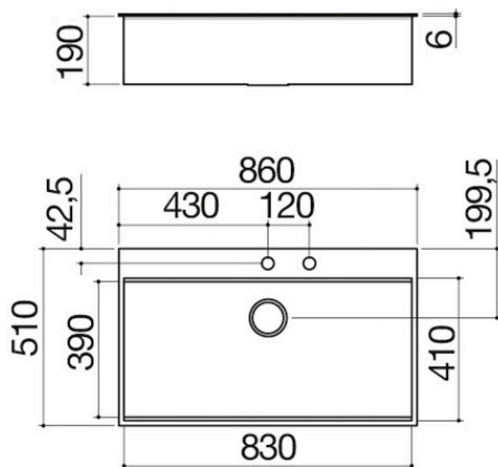




86x51 cm B_Free built-in sink

1 bowl with lowering

1LBF9



Description

- extra-thick AISI 304
- stainless steel
- bowl with radius "0" vertical wall edges
- bowl with radius "12" bottom edges
- 83x39x19 h bowl
- bowl with lowering for sliding of accessories
- equipment: 3½" basket strainer waste, stainless steel drain cover, pop-up plug, perimeter overflow
- tap hole: 2 standard holes
- base unit for bowls: 90
- 84x49 cm cut out



Plus

Detailed Features



AISI 304 stainless steel

Barazza products are made of high-quality AISI 304 stainless steel, which guarantees resistance to stress, long-lasting durability and ease of cleaning.



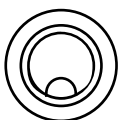
Extra-thick AISI 304 stainless steel

Barazza uses thick AISI 304 stainless steel, which is fully recyclable, corrosion-resistant, durable and highly hygienic.



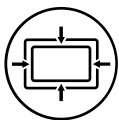
Deep bowls

Products with this plus feature large, deep bowls capable of accommodating high volumes of water and large cookware.



Stainless steel drain cover

Practical and stylish, the stainless steel drain cover is the ideal accessory for every sink. Made of high-quality AISI 304 stainless steel, it offers resistance, durability and ease of cleaning.



Perimeter overflow

All Barazza sinks and bowls are equipped with an overflow device that prevents water from spilling. Some versions feature a perimeter overflow, with an exclusive and refined design. Smart pop-up waste.



Radius 0

Squared and elegant bowl radius for a minimalist and contemporary look.



Pop-up waste

It allows you to empty the bowl by rotating it without having to intervene with your hands inside it.



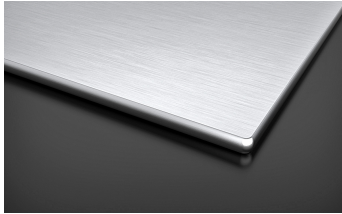
Installations

Installation Method



SQEB

Square edge built-in



The folded edge rests on the worktop.



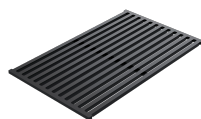
Related Accessories



1TBF



1VBF



1GQRN

Related Products



1LBF9K