



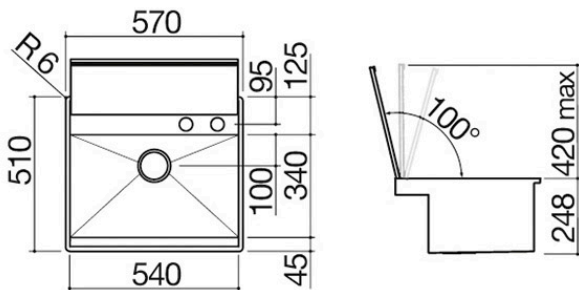
# 57x51 cm Lab Cover built-in and flush sink

## 1 bowl with cover + tap

1LLB60

### Description

- extra-thick AISI 304
- stainless steel
- bowl with radius "0"
- 54x34x18.3 h bowl
- balanced, removable
- stainless steel cover with
- manual opening
- equipment: 3½" basket strainer
- waste, perimeter overflow,
- B\_Free Telescopic mixer tap
- with remote control
- 1RUBMBFA
- tap hole: 2 standard holes
- base unit for bowls: 60
- 56x49 cm cut out
- flush-top: check technical sheet





# Plus

## Detailed Features



AISI 304 stainless steel

Barazza products are made of high-quality AISI 304 stainless steel, which guarantees resistance to stress, long-lasting durability and ease of cleaning.



Extra-thick AISI 304 stainless steel

Barazza uses thick AISI 304 stainless steel, which is fully recyclable, corrosion-resistant, durable and highly hygienic.



Deep bowls

Products with this plus feature large, deep bowls capable of accommodating high volumes of water and large cookware.



Perimeter overflow

All Barazza sinks and bowls are equipped with an overflow device that prevents water from spilling. Some versions feature a perimeter overflow, with an exclusive and refined design. Smart pop-up waste.



Radius 0

Squared and elegant bowl radius for a minimalist and contemporary look.



Remote control



The remote control supplied with Lab Evolution, B\_Draft and B\_Ambient hoods allows users to activate the LED light and select the desired speed.



Telescopic tap

Barazza telescopic taps can be positioned and hidden at worktop level.



Stainless steel cover

Flush-fitting, balanced and removable AISI 304 stainless steel cover.

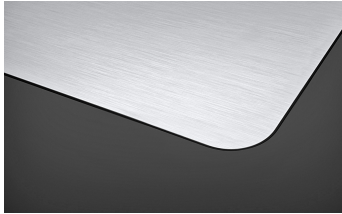


# Installations

## Installation Method



Flush-top



Ensures perfect alignment with the worktop



Flat edge built-in



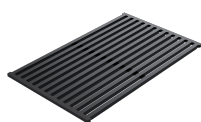
The edge is perceptible only to the touch and makes installation easy.



## Related Accessories



1CPI



1GQRN

## Related Products



1LLB90