



36 cm B_Free built-in hob

double ring 5 kW

1PBF1



Description

- extra-thick AISI 304
- stainless steel
- cast iron pan support
- burner with dual control
- 34x49 cm cut out

Burner power:

- 1 Chef double ring: 5 kW
- (central 0.8 kW and ring 4.2 kW)



SEE OTHER AVAILABLE DESIGNS:



1PBF2



1PBFTK1



1PFBFQ



1PBF3ID



Plus

Detailed Features



AISI 304 stainless steel

Barazza products are made of high-quality AISI 304 stainless steel, which guarantees resistance to stress, long-lasting durability and ease of cleaning.



Extra-thick AISI 304 stainless steel

Barazza uses thick AISI 304 stainless steel, which is fully recyclable, corrosion-resistant, durable and highly hygienic.



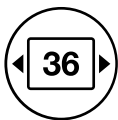
Cast iron pan supports

Made of cast iron, like those used in professional kitchens, they are particularly solid, heat-resistant, durable, and able to retain and distribute heat more effectively.



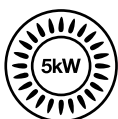
Stainless steel knobs

Made of stainless steel, Barazza hob knobs are robust, pleasant to the touch and allow smooth, precise power regulation for burners or induction zones.



Module width 36

Barazza hobs are available in various widths designed to fit the most common standard kitchen unit modules.



5 kW double crown burner



Burner that guarantees high performance thanks to a very high power, regulated by two knobs that activate the internal 0.8 kW flame, the external 4.2 kW flame or both.



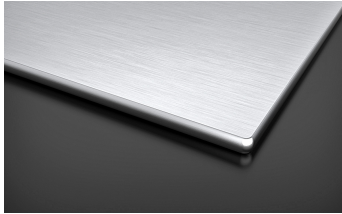
Installations

Installation Method



SQEB

Square edge built-in



The folded edge rests on the worktop.



Related Accessories



1RWJ

Related Products



1PBF2



1PBFTK1



1PFBQ



1PBF64



1PBF74