



# 36 cm B\_Free built-in hob

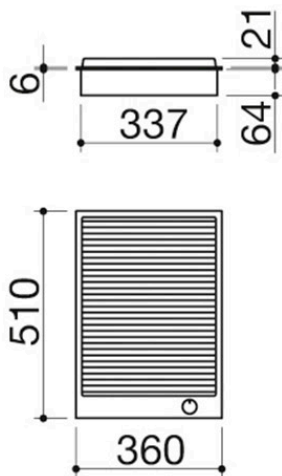
## barbecue

1PBFBQ

### Description



- extra-thick AISI 304
- stainless steel
- barbecue with electric element
- cast iron grid
- lava stone to absorb
- cooking liquids
- removable tray
- settings 0 to 9
- heating element activation indicator
- maximum absorbed power: 1.75 kW
- 34x49 cm cut out



SEE OTHER AVAILABLE DESIGNS:



1PBF1



1PBF2



1PBFTK1



1PBF3ID



# Plus

## Detailed Features



AISI 304 stainless steel

Barazza products are made of high-quality AISI 304 stainless steel, which guarantees resistance to stress, long-lasting durability and ease of cleaning.



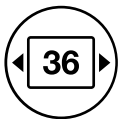
Extra-thick AISI 304 stainless steel

Barazza uses thick AISI 304 stainless steel, which is fully recyclable, corrosion-resistant, durable and highly hygienic.



Stainless steel knobs

Made of stainless steel, Barazza hob knobs are robust, pleasant to the touch and allow smooth, precise power regulation for burners or induction zones.



Module width 36

Barazza hobs are available in various widths designed to fit the most common standard kitchen unit modules.



Barbecue

Electric barbecue, with lava rock that absorbs fat and prevents the formation of smoke, guarantees a cooking quality similar to traditional grilling.



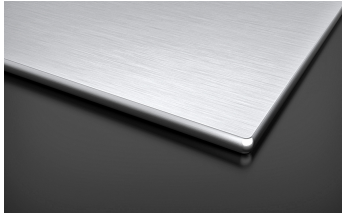
# Installations

## Installation Method



SQEB

Square edge built-in



The folded edge rests on the worktop.



## Related Products



1PBF1



1PBF2



1PBFTK1



1PBF64



1PBF74