



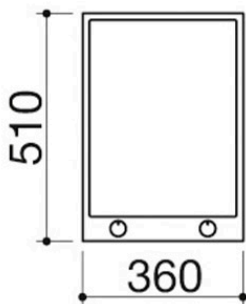
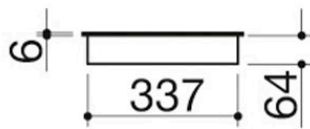
36 cm B_Free built-in hob

teppanyaki

1PBFTK1

Description

- extra-thick AISI 304
- stainless steel
- 6 mm AISI 304 stainless steel single hotplate
- thermostat
- 2 cooking zones
- electronic temperature control
- from 50 °C to 270 °C
- hotplate activation indicator and thermostat
- maximum absorbed power: 1 kW
- 34x49 cm cut out



SEE OTHER AVAILABLE DESIGNS:



1PBF1



1PBF2



1PFBQ



1PBF3ID



Plus

Detailed Features



AISI 304 stainless steel

Barazza products are made of high-quality AISI 304 stainless steel, which guarantees resistance to stress, long-lasting durability and ease of cleaning.



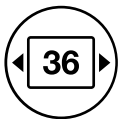
Extra-thick AISI 304 stainless steel

Barazza uses thick AISI 304 stainless steel, which is fully recyclable, corrosion-resistant, durable and highly hygienic.



Stainless steel knobs

Made of stainless steel, Barazza hob knobs are robust, pleasant to the touch and allow smooth, precise power regulation for burners or induction zones.



Module width 36

Barazza hobs are available in various widths designed to fit the most common standard kitchen unit modules.



Teppanyaki

Electric stainless steel teppanyaki plate (6 mm thick) with two independently or simultaneously usable zones, ideal for cooking meat, fish and vegetables without added fats.



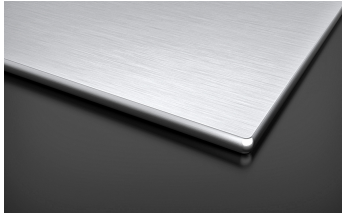
Installations

Installation Method



SQEB

Square edge built-in



The folded edge rests on the worktop.



Related Products



1PBF1



1PBF2



1PFBQ



1PBF64



1PBF74