



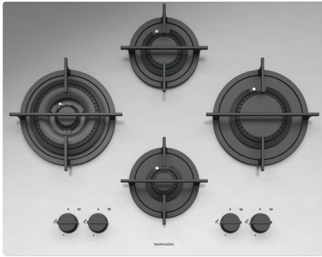
# 65 cm Mood built-in hob

## 3 gas burners + Flat Eco-Design double ring

1PMD64

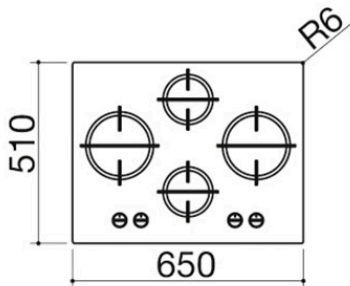
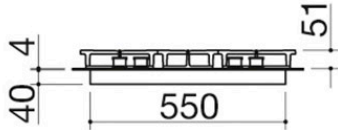
### Description

- 4 mm thick AISI 304 stainless steel
- Flat Eco-Design burners
- cast iron pan supports
- 56x48 cm cut out



### Burner power:

- 1 auxiliary: 1 kW
- 1 semi-rapid: 1.75 kW
- 1 rapid: 3 kW
- 1 double ring: 4 kW



SEE OTHER AVAILABLE DESIGNS:



1PMD64N



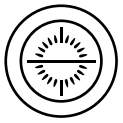
# Plus

## Detailed Features



Cast iron pan supports

Made of cast iron, like those used in professional kitchens, they are particularly solid, heat-resistant, durable, and able to retain and distribute heat more effectively.



Flat Eco-Design burners

The special Flat Eco-Design burners generate a vertical flame, ensuring higher efficiency, lower consumption and maximum uniformity in cooking.



Double crown burner 4 kW

Two efficient and high-performance flame rings deliver an enhanced 4 kW output for faster and more even cooking.



Module width 65

Barazza hobs are available in various widths designed to fit the most common standard kitchen unit modules.



AISI 304 stainless steel, 4 mm thick

The full thickness of 4 mm is the maximum expression of the qualities of AISI 304 steel, combining aesthetic and design qualities with unparalleled strength and durability.



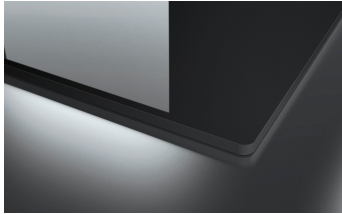
# Installations

## Installation Method



EB4

Edge built-in 4mm



The solid 4 mm thick stainless steel makes the Mood stainless steel collection a true example of design and sophistication.



## Related Products



1PMD70



1PMD75



1PMD95



1PMD104



1PMD70B