



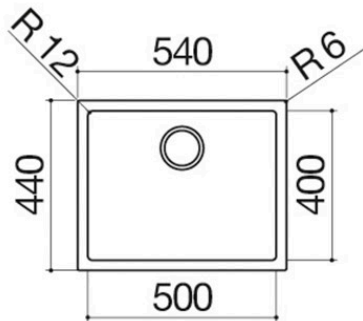
50x40 cm Square Bowl R."12" 316

1QR506

Description



- extra-thick AISI 316 stainless steel
- 50x40x20 h bowl
- equipment: 3½" basket strainer waste,
- B overflow
- base unit for bowls:
 - - built-in and flush: 60
 - - undermounted: 80
- 52x42 cm cut out
- + notch for overflow
- flush-top and undermounted: check technical sheet





Plus

Detailed Features



Extra-thick AISI 304 stainless steel

Barazza uses thick AISI 304 stainless steel, which is fully recyclable, corrosion-resistant, durable and highly hygienic.



Deep bowls

Products with this plus feature large, deep bowls capable of accommodating high volumes of water and large cookware.



Radius 12

Radius with a slightly rounded edge.



AISI 316 stainless steel

Elements made of AISI 316 stainless steel, a fully recyclable, durable and highly hygienic material, extremely resistant to weather and salt.



Installations

Installation Method



Flush-top



Ensures perfect alignment with the worktop



Flat edge built-in



The edge is perceptible only to the touch and makes installation easy.



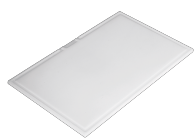
Undermounted



The square bowls are elegantly installed beneath the worktop.



Related Accessories



1TOF26



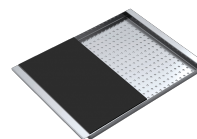
1VOF



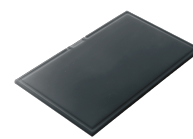
1VSOF



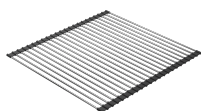
1CIVQ



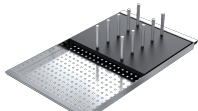
1CITN



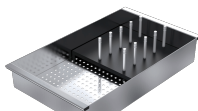
1TOF26N



1GSPA



1CIFX



1VSFX



1GLN



1GQRN

Related Products



1LLB616



1LLB916



1LLB606



1QR406



1QR706