



# 70x40 cm Square Bowl R. "12"

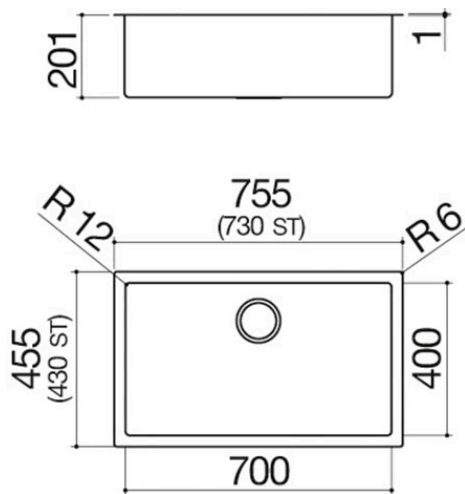
**built-in, flush**

1QR70I



## Description

- extra-thick AISI 304
- stainless steel
- 70x40x20 h bowl
- equipment: 3½" basket strainer waste,
- stainless steel drain cover, perimeter
- overflow
- base unit for bowls:
  - - built-in and flush: 80
  - - undermounted: 90
- 73.5x43.7 cm cut out
- flush-top and undermounted: check technical sheet





# Plus

## Detailed Features



AISI 304 stainless steel

Barazza products are made of high-quality AISI 304 stainless steel, which guarantees resistance to stress, long-lasting durability and ease of cleaning.



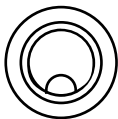
Extra-thick AISI 304 stainless steel

Barazza uses thick AISI 304 stainless steel, which is fully recyclable, corrosion-resistant, durable and highly hygienic.



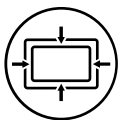
Deep bowls

Products with this plus feature large, deep bowls capable of accommodating high volumes of water and large cookware.



Stainless steel drain cover

Practical and stylish, the stainless steel drain cover is the ideal accessory for every sink. Made of high-quality AISI 304 stainless steel, it offers resistance, durability and ease of cleaning.



Perimeter overflow

All Barazza sinks and bowls are equipped with an overflow device that prevents water from spilling. Some versions feature a perimeter overflow, with an exclusive and refined design. Smart pop-up waste.



Radius 12

Radius with a slightly rounded edge.

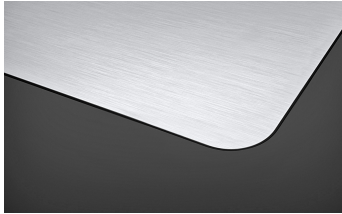


# Installations

## Installation Method



Flush-top



Ensures perfect alignment with the worktop



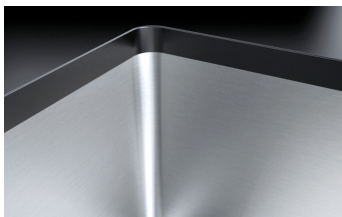
Flat edge built-in



The edge is perceptible only to the touch and makes installation easy.



Undermounted



The square bowls are elegantly installed beneath the worktop.



## Related Accessories



1TOF26



1VOF



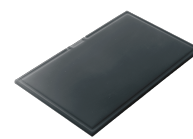
1VSOF



1CIVQ



1CITN



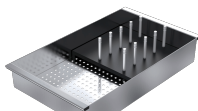
1TOF26N



1GSPA



1CIFX



1VSFX



1GLN



1GQRN



1SPR



1SPSI



1SPSN

## Related Products



1QR34I



1QR34S



1QR40I



1QR40S



1QR50I