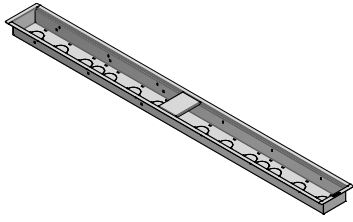


## 1CI187\_

**DESCRIZIONE** Canale H.7 incasso e filo da 180  
**DESCRIPTION** 180cm built-in and flush H.7 channel

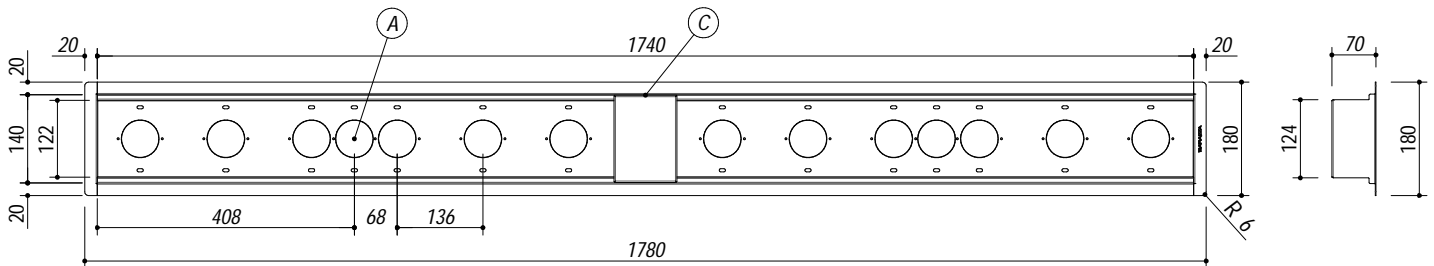
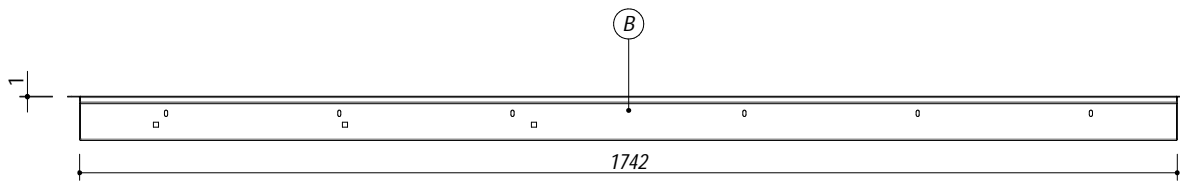
**PESO LORDO** 11 Kg  
**GROSS WEIGHT**

**DIMENSIONI IMBALLO** 1900x240x270 mm  
**PACKAGING DIMENSIONS**



1CI187 ACCIAIO INOX SATINATO STAINLESS STEEL  
 1CI187N ACCIAIO INOX NERO OPACO MATT BLACK STAINLESS STEEL

- acciaio inox AISI 304 di spessore elevato (AISI 304 extra thick stainless steel)
- predisposizione per l'inserimento di 6 moduli (predisposition for the insertion of 6 modules)
- fissaggi 1CPP (1CPP fixing) (B)
- fori passa cavo / installazione 1CSR7 e 1CSR7P (holes for cable passage / 1CSR7 and 1CSR7P installation) (A)
- dotazione: ripiano mobile da 10x13.8cm (included: 10x13.8cm movable shelf) (C)
- incasso: 176x16cm (built-in)
- filotop: 178.3x18.3cm (flush)



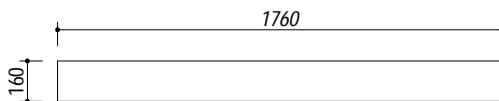
**SCALA DISEGNO** 1:12  
**DRAWING SCALE**

**TUTTE LE MISURE IN mm**  
**ALL MEASURES IN mm**

**TOLLERANZA LINEARE:** ± 0.5 mm  
**LINEAR TOLERANCE**

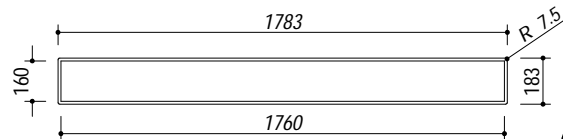
**TOLLERANZA ANGOLARE:** ± 0.2 °  
**ANGULAR TOLERANCE**

**FORATURA PER INSTALLAZIONE AD INCASSO**  
**BUILT-IN CUTOUT FOR TOP**



1:30

**FORATURA PER INSTALLAZIONE A FILO**  
**FLUSH CUTOUT FOR TOP**



1:30

**ABBASSAMENTO**  
**LOWERING**

