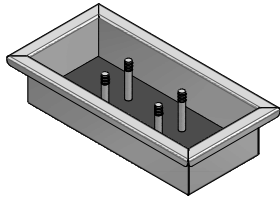


1CSPF_

DESCRIZIONE Vaschetta cieca in acciaio inox con scolapiatti con pioli in acciaio inox e Fenix
DESCRIPTION Stainless steel container tray with Fenix draining rack with pegs

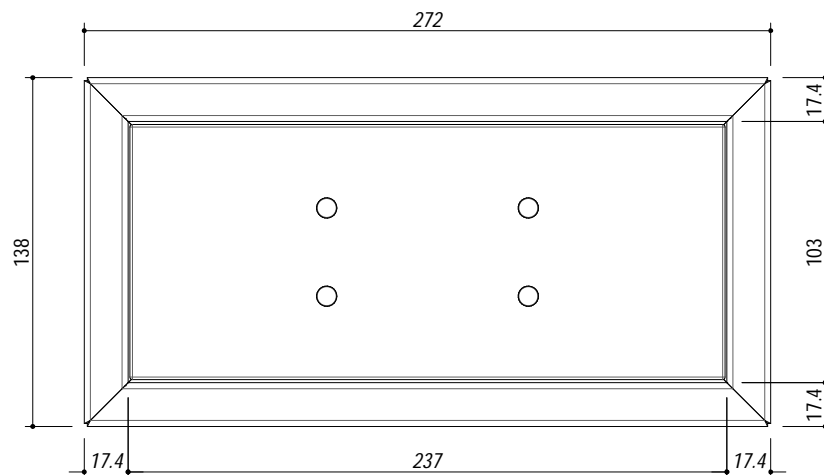
PESO LORDO 1.5 Kg
GROSS WEIGHT

DIMENSIONI IMBALLO 300x230x120 mm
PACKAGING DIMENSIONS



1CSPF ACCIAIO INOX SATINATO STAINLESS STEEL
 1CSPFN ACCIAIO INOX NERO OPACO MATT BLACK STAINLESS STEEL

- acciaio inox AISI 304 di spessore elevato (extra-thick AISI 304 stainless steel)
- dimensione: 1 modulo (dimension: 1 module)
- predisposizione per 3 piatti fondi o piani (designed for 3 plates or soup bowl)



SCALA DISEGNO 1:3
 DRAWING SCALE



TUTTE LE MISURE IN mm
 ALL MEASURES IN mm

TOLLERANZA LINEARE: ± 0.5 mm
 LINEAR TOLLERANCE

TOLLERANZA ANGOLARE: ± 0.2 °
 ANGULAR TOLLERANCE