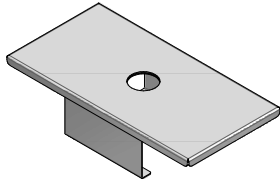


## 1CSR7\_

**DESCRIZIONE** Supporto in acciaio inox per rubinetto/dispenser/doccino  
**DESCRIPTION** Stainless steel support for mixer tap/dispenser/pull-out head spray

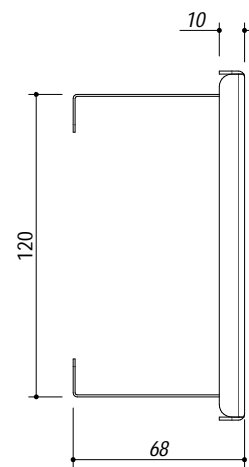
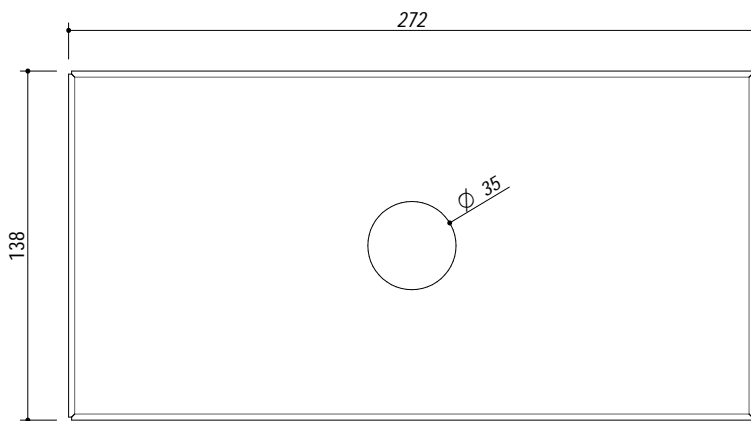
**PESO LORDO** 1.5 Kg  
**GROSS WEIGHT**

**DIMENSIONI IMBALLO** 300x230x120 mm  
**PACKAGING DIMENSIONS**

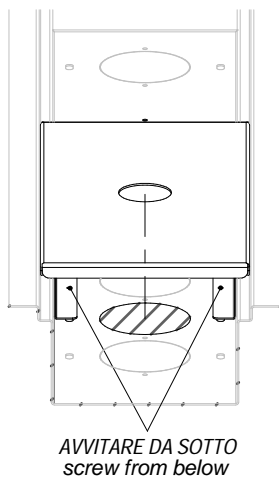


1CSR7 ACCIAIO INOX SATINATO STAINLESS STEEL  
 1CSR7N ACCIAIO INOX NERO OPACO MATT BLACK STAINLESS STEEL

- acciaio inox AISI 304 di spessore elevato (extra-thick AISI 304 stainless steel)  
 - dimensione: 1 modulo (dimension: 1 module)

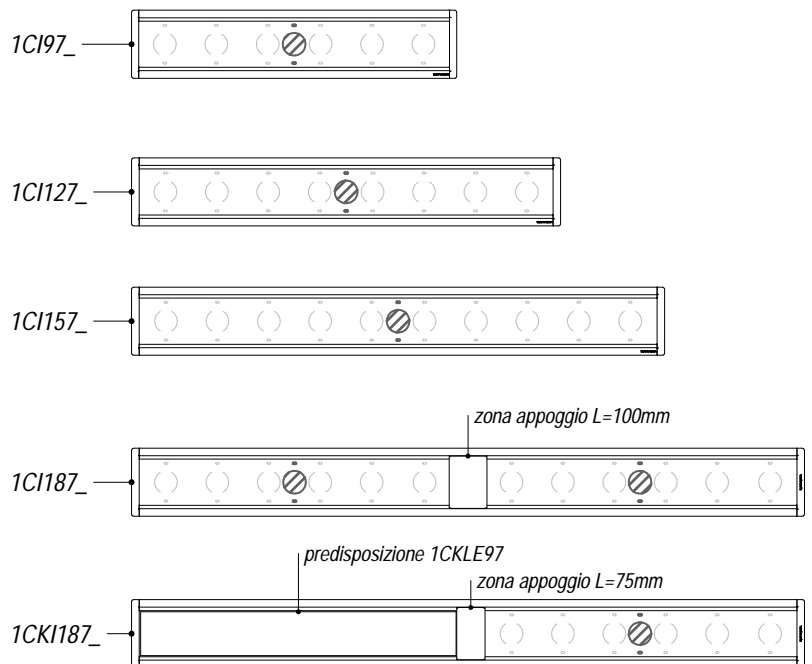


### FISSAGGIO SU CANALE CHANNEL FIX



1:5

### INSTALLAZIONE SU CANALE SOLO SUI PREFORI EVIDENZIATI INSTALLATION ON THE CHANNEL AVAILABLE ONLY ON HIGHLIGHTED PRE-CUT



1:20

**SCALA DISEGNO** 1:3  
**DRAWING SCALE**



**TUTTE LE MISURE IN mm**  
**ALL MEASURES IN mm**

**TOLLERANZA LINEARE: ± 0.5 mm**  
**LINEAR TOLERANCE**

**TOLLERANZA ANGOLARE: ± 0.2 °**  
**ANGULAR TOLERANCE**