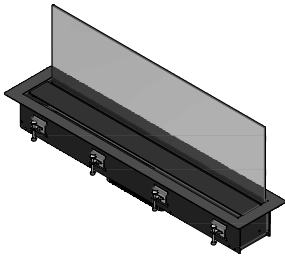


## 1KLE9

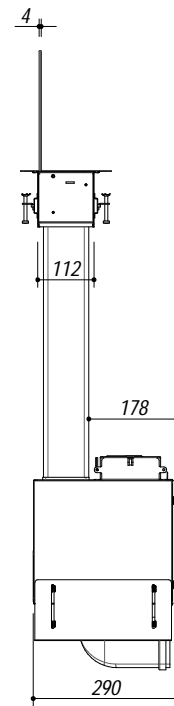
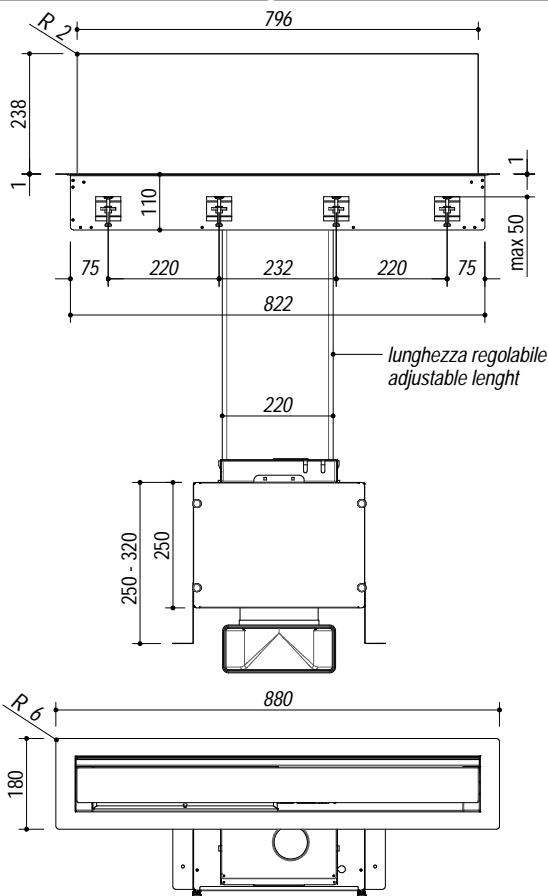
**DESCRIZIONE** Cappa Lab Evolution Filo/Incasso  
**DESCRIPTION** Flush/Built-in Lab Evolution hood

**PESO LORDO** 21 Kg  
**GROSS WEIGHT**

**DIMENSIONI IMBALLO** 1060x630x470 mm  
**PACKAGING DIMENSIONS**



- acciaio inox AISI 304 nero opaco (black mat AISI 304 stainless steel)
- aspirazione filtrante opzionale (optional filtered aspiration)
- velocità: 3 + 1 (speed: 3 + 1)
- pressione: 334 Pa (pressure: 334 Pa)
- portata: 800m³/h (engine flow: 800m³/h)
- portata booster: 570m³/h (booster flow: 570m³/h)
- rumorosità: 41 - 66 Lw[dBA] (noisiness: 41 - 66 Lw[dBA])
- uscita aspirazione: ø150 + raccordo per tubi [sezione rettangolare 220x90] (duct exit: ø 150 + junction for pipes [rectangular section 220x90])
- filtri: acciaio inox (filter: stainless steel)
- funzioni: allarme sonoro per pulizia filtri (functions: sound alarm for filter cleaning)
- radiocomando in dotazione (radio control supplied)
- classe energetica: C (energy class: C)
- predisposizione per radiocomando remoto bilancia Barazza (Barazza scale remote control predisposition)
- compatibile con piani induzione con zone in linea e piani gas cod.1PLE2D, 1PLB2T (compatible with induction hob with in-line burners and with gas hob cod. 1PLE2D, 1PLB2T)
- potenza massima assorbita: 0,275 kW (maximum absorbed power: 0,275 kW)
- classe energetica: C (energy class: C)
- incasso: 86x16 cm (built-in: 86x16 cm)
- filotop: 88,3x18,3 cm (flush: 88,3x18,3 cm)



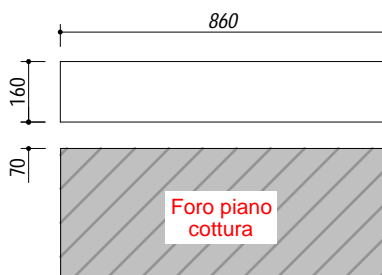
**SCALA DISEGNO** 1:10  
**DRAWING SCALE**

**TUTTE LE MISURE IN mm**  
**ALL MEASURES IN mm**

**TOLLERANZA LINEARE:** ± 0.5 mm  
**LINEAR TOLERANCE**

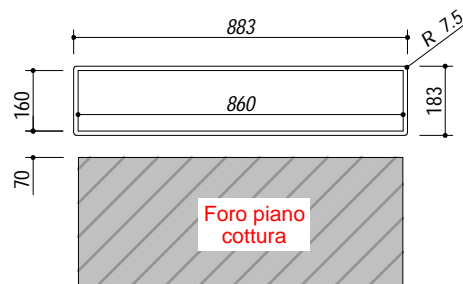
**TOLLERANZA ANGOLARE:** ± 0.2 °  
**ANGULAR TOLERANCE**

**FORATURA PER INSTALLAZIONE AD INCASSO**  
**BUILT-IN CUTOUT FOR TOP**



1:20

**FORATURA PER INSTALLAZIONE A FILO**  
**FLUSH CUTOUT FOR TOP**



1:20

**ABBASSAMENTO**  
**LOWERING**

